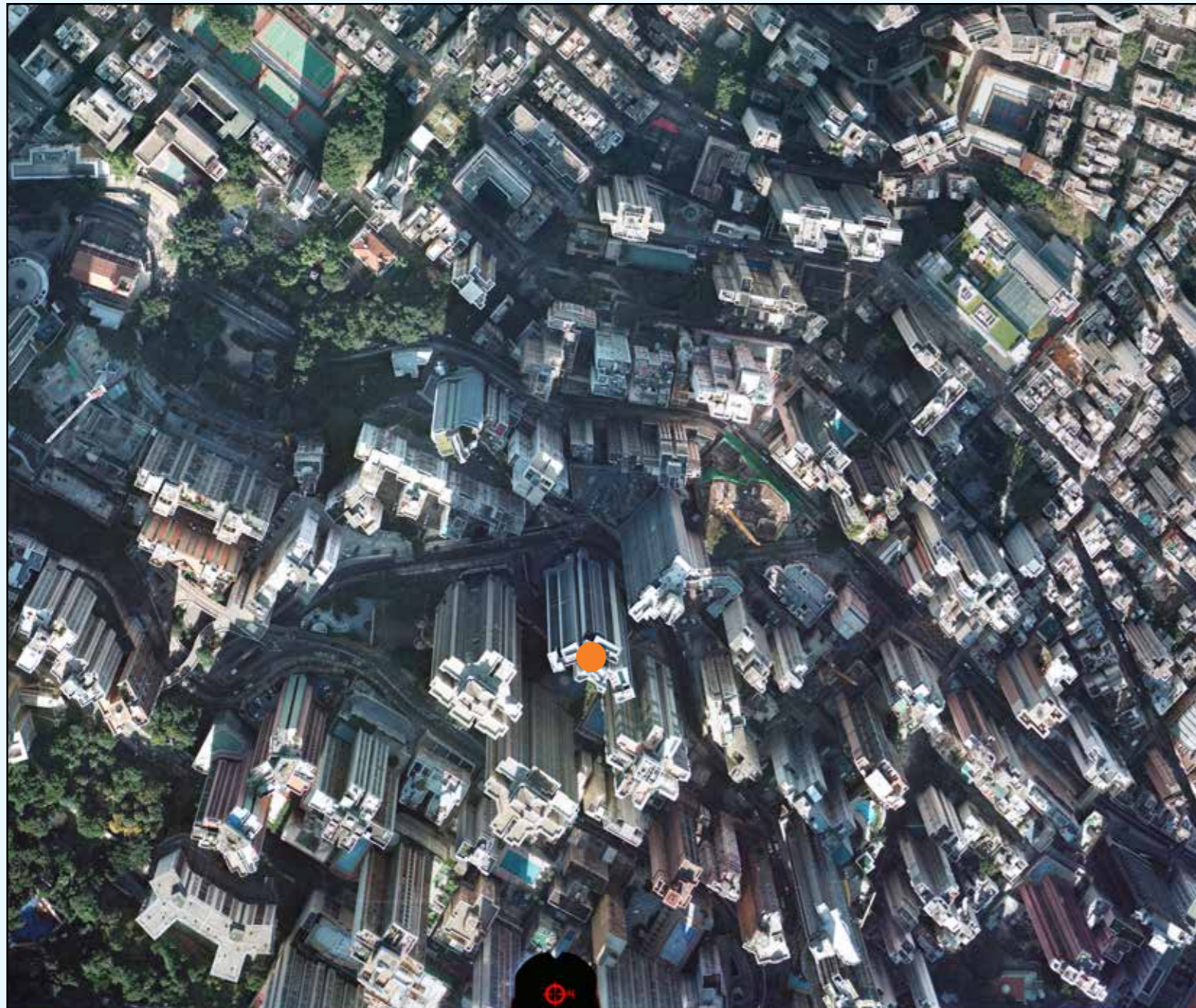


AERIAL PHOTOGRAPH OF THE DEVELOPMENT

發展項目的鳥瞰照片



Adopted from part of the aerial photograph taken by the Survey and Mapping Office of Lands Department at a flying height 6,000 feet, photo no. CS55119, dated 1 January 2015.

摘錄自於地政總署測繪處於2015年1月1日在6,000呎飛行高度拍攝之鳥瞰照片，編號為CS55119。

Notes:

1. The aerial photograph is available for free inspection during normal office hours at the sales office.
2. The aerial photograph may show more than the area required under the Residential Properties (First-hand Sales) Ordinance due to the technical reason that the boundary of the Development is irregular.

附註：

1. 鳥瞰照片現存於售樓處，於正常辦公時間可供免費查閱。
2. 由於發展項目的邊界不規則的技術原因，鳥瞰照片可能顯示多於《一手住宅物業銷售條例》所要求顯示的範圍。

香港特別行政區政府 Survey & Mapping Office, Lands Department
地政總署測繪處 The Government of Hong Kong Special Administrative Region
©版權所有 未經許可 不得複製 This is a portion enlargement of the aerial photo. P2F2000
Ref. "CS55119 1 Jan 2015 6000' Sheung Wan"

This blank area falls outside the coverage of the relevant aerial photograph
此鳥瞰照片並不覆蓋本空白範圍

AERIAL PHOTOGRAPH OF THE DEVELOPMENT

發展項目的鳥瞰照片



This blank area falls outside the coverage of the relevant aerial photograph
此鳥瞰照片並不覆蓋本空白範圍

Adopted from part of the aerial photograph taken by the Survey and Mapping Office of Lands Department at a flying height 2,000 feet, photo no. CW109074, dated 16 July 2014.

摘錄自於地政總署測繪處於2014年7月16日在2,000呎飛行高度拍攝之鳥瞰照片，編號為CW109074。

Notes:

1. The aerial photograph is available for free inspection during normal office hours at the sales office.
2. The aerial photograph may show more than the area required under the Residential Properties (First-hand Sales) Ordinance due to the technical reason that the boundary of the Development is irregular.

附註：

1. 鳥瞰照片現存於售樓處，於正常辦公時間可供免費查閱。
2. 由於發展項目的邊界不規則的技術原因，鳥瞰照片可能顯示多於《一手住宅物業銷售條例》所要求顯示的範圍。



This blank area falls outside the coverage of the relevant aerial photograph
此鳥瞰照片並不覆蓋本空白範圍

Adopted from part of the aerial photograph taken by the Survey and Mapping Office of Lands Department at a flying height 2,000 feet, photo no. CW109073, dated 16 July 2014.

摘錄自於地政總署測繪處於2014年7月16日在2,000呎飛行高度拍攝之鳥瞰照片，編號為CW109073。

Notes:

1. The aerial photograph is available for free inspection during normal office hours at the sales office.
2. The aerial photograph may show more than the area required under the Residential Properties (First-hand Sales) Ordinance due to the technical reason that the boundary of the Development is irregular.

附註：

1. 鳥瞰照片現存於售樓處，於正常辦公時間可供免費查閱。
2. 由於發展項目的邊界不規則的技術原因，鳥瞰照片可能顯示多於《一手住宅物業銷售條例》所要求顯示的範圍。

AERIAL PHOTOGRAPH OF THE DEVELOPMENT

發展項目的鳥瞰照片

This blank area falls outside the coverage of the relevant aerial photograph
此鳥瞰照片並不覆蓋本空白範圍



Adopted from part of the aerial photograph taken by the Survey and Mapping Office of Lands Department at a flying height 2,000 feet, photo no. CW108960, dated 16 July 2014.

摘錄自於地政總署測繪處於2014年7月16日在2,000呎飛行高度拍攝之鳥瞰照片，編號為CW108960。

Notes:

1. The aerial photograph is available for free inspection during normal office hours at the sales office.
2. The aerial photograph may show more than the area required under the Residential Properties (First-hand Sales) Ordinance due to the technical reason that the boundary of the Development is irregular.

附註：

1. 鳥瞰照片現存於售樓處，於正常辦公時間可供免費查閱。
2. 由於發展項目的邊界不規則的技術原因，鳥瞰照片可能顯示多於《一手住宅物業銷售條例》所要求顯示的範圍。

This blank area falls outside the coverage of the relevant aerial photograph
此鳥瞰照片並不覆蓋本空白範圍



Adopted from part of the aerial photograph taken by the Survey and Mapping Office of Lands Department at a flying height 2,000 feet, photo no. CW108961, dated 16 July 2014.

摘錄自於地政總署測繪處於2014年7月16日在2,000呎飛行高度拍攝之鳥瞰照片，編號為CW108961。

Notes:

1. The aerial photograph is available for free inspection during normal office hours at the sales office.
2. The aerial photograph may show more than the area required under the Residential Properties (First-hand Sales) Ordinance due to the technical reason that the boundary of the Development is irregular.

附註：

1. 鳥瞰照片現存於售樓處，於正常辦公時間可供免費查閱。
2. 由於發展項目的邊界不規則的技術原因，鳥瞰照片可能顯示多於《一手住宅物業銷售條例》所要求顯示的範圍。